

TIFFAN

Y & Co.

THIS IS TIFFANY
N°6



Who doesn't love to be taken by surprise?
To see things through new eyes?
At Tiffany, we have always been instigators of
thought and action, believers in pushing
boundaries, champions of taking things a little
further than most would dare. Thinkers and
dreamers lie at the heart of our legacy, and every
day, through exquisite design and masterful
craftsmanship, we create a world that
is beguiling and beautifully unexpected.

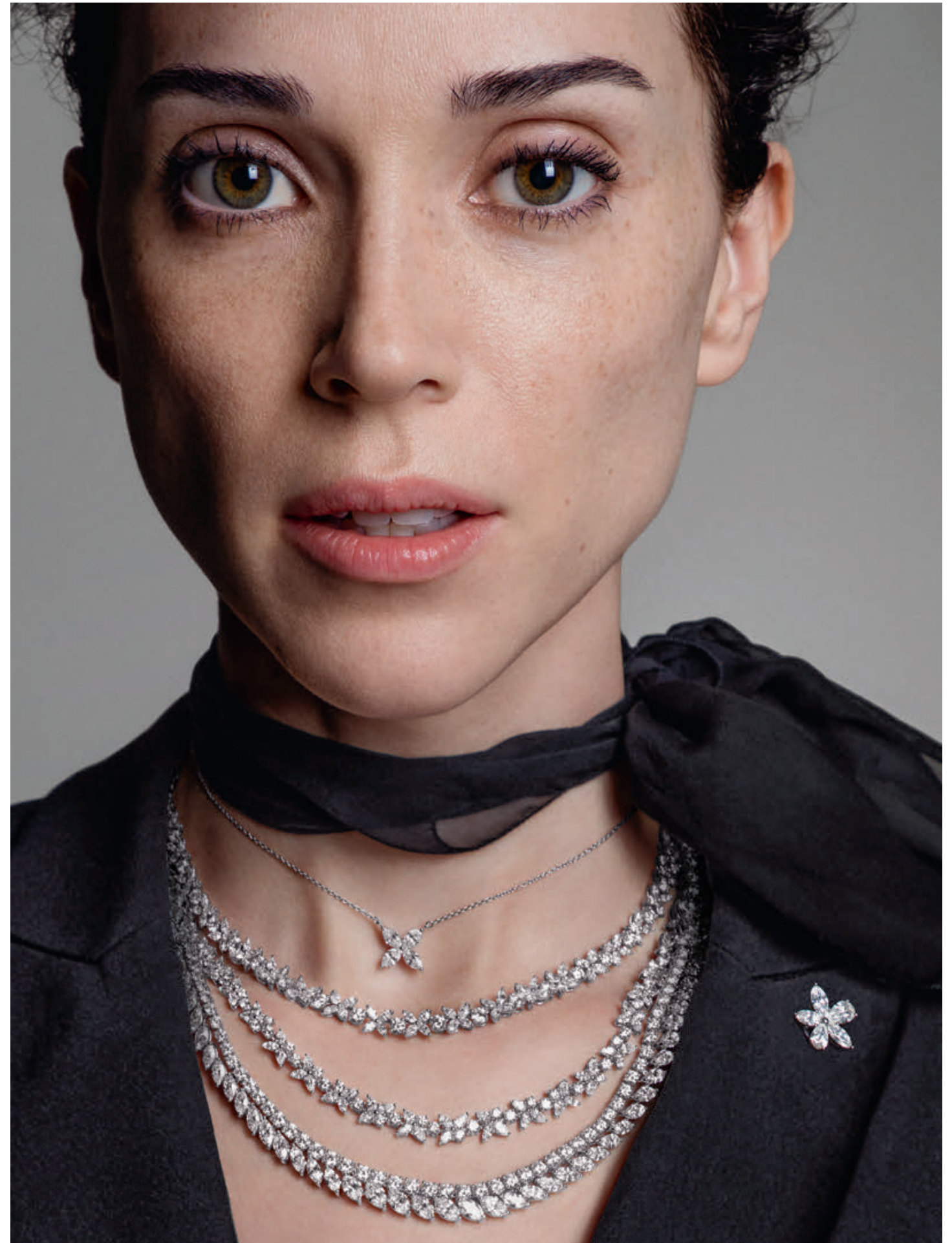
This is Tiffany.

There's *Only One*

TIFFANY HAS ALWAYS STOOD FOR CREATIVITY,
PASSION, OPTIMISM AND INDIVIDUALITY.
THESE EXUBERANTLY UNCONVENTIONAL WOMEN AND
MEN EPITOMIZE EVERYTHING WE BELIEVE IN.

Photographs by Inez van Lamsweerde and Vinoodh Matadin





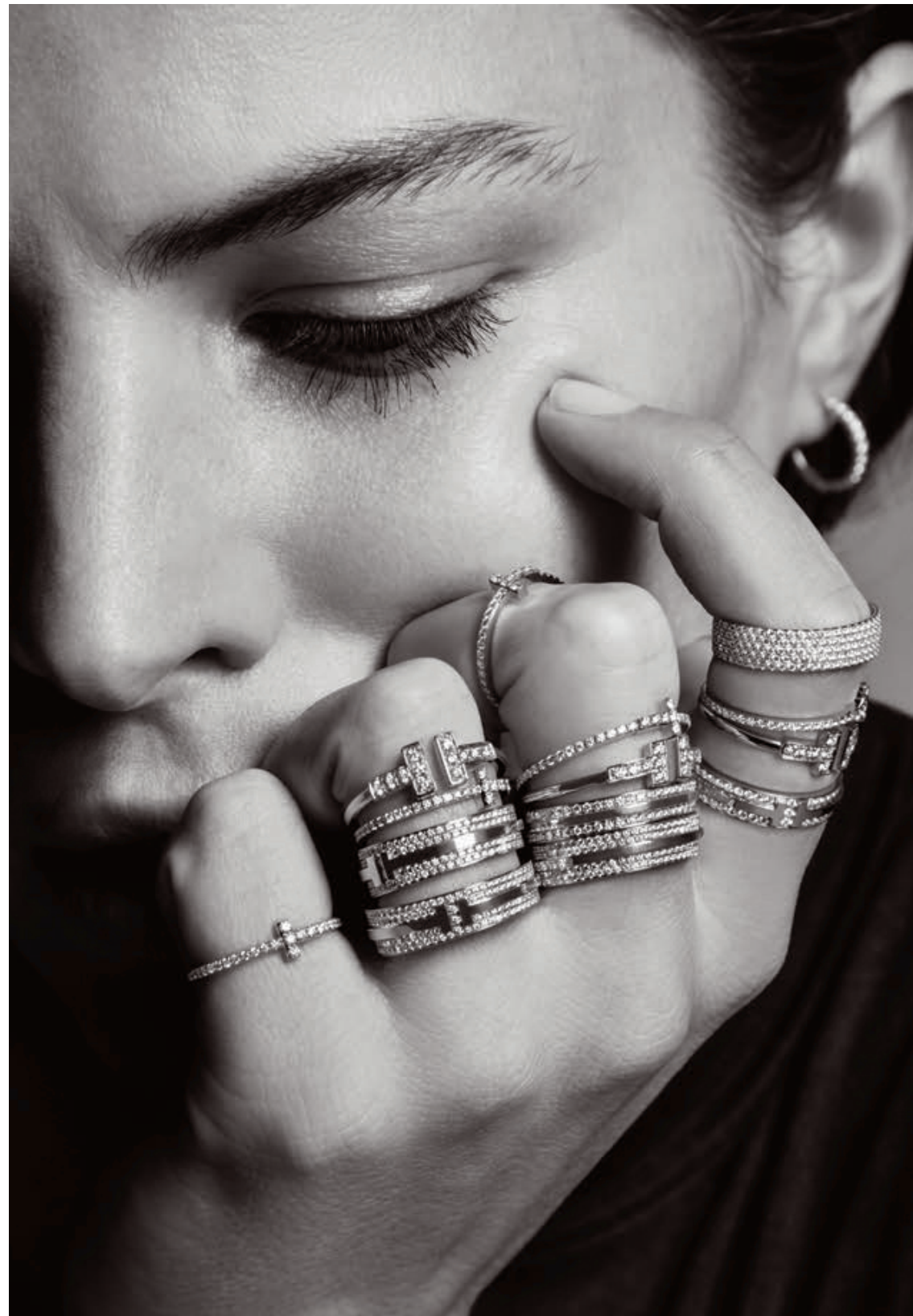
Previous page: Tiffany Keys with diamonds, from \$2,000. Chain sold separately. *This page:* Paloma's Graffiti love ring, \$3,900. Tiffany Victoria® ring, \$13,750. Ring with diamonds, price upon request. I.D. bracelet, \$500. *Opposite page:* Tiffany Victoria® designs, from \$2,000. Necklace with diamonds, price upon request. Original designs copyrighted by Paloma Picasso.



This spread: Tiffany HardWear designs, from \$175. Tiffany Tags designs, from \$500. Tiffany T designs, from \$1,600. Tiffany Victoria® designs, from \$14,000. Tiffany Metro designs, from \$2,300. Paloma Picasso® ring, from \$500. Tiffany® Diamond Wedding Band, from \$3,200. Original designs copyrighted by Paloma Picasso.



Opposite page: Tiffany & Co. Schlumberger® Bird on a Rock clip, price upon request. This page: Tiffany East West® 2-Hand 42 x 25 mm watch, \$3,750. Venetian link bracelet, \$210.

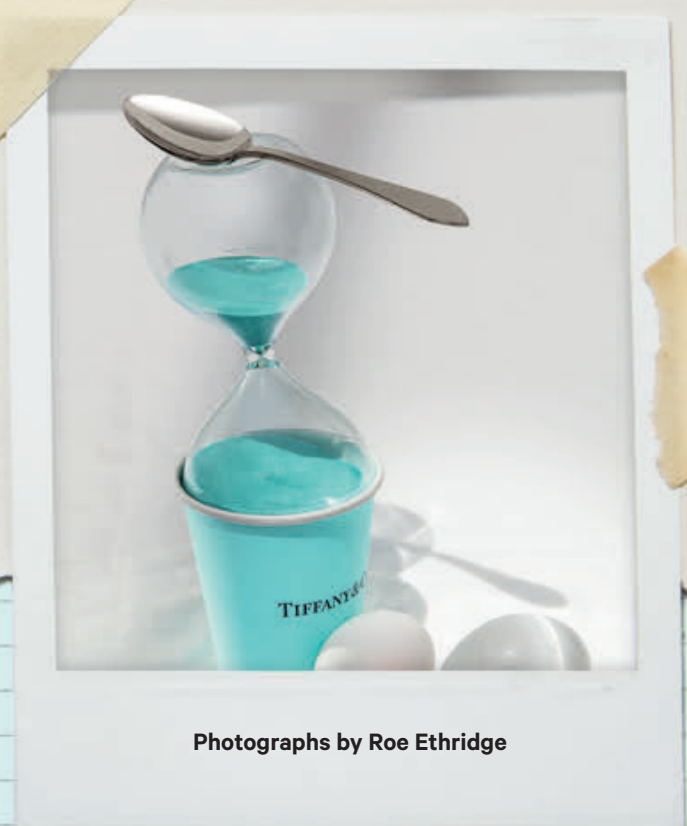




Opposite page: Tiffany T designs, from \$1,900. Tiffany Enchant® designs, \$75,000.
Tiffany Victoria® designs, from \$1,800. This page: Return to Tiffany® pendant, \$300. Tiffany Metro, \$2,650.
Tiffany Tags, \$500. Tiffany HardWear pendant, from \$9,000.

A Beautiful Life

WHEN FORM FOLLOWS FUNCTION,
BEAUTY BEFRIENDS WHIMSY
AND QUALITY COMES BEFORE ALL
ELSE, THE GAME OF LIVING WELL
CHANGES COMPLETELY. TIFFANY'S
NEW HOME & ACCESSORIES
COLLECTION REWRITES THE RULES
OF LUXURY.



Photographs by Roe Ethridge





Previous spread and this page: Home and Accessories designs, from \$95.





Opposite page: Leather goods designs, from \$375. Pencil sharpener, \$275.
This page: Tiffany Baby designs, from \$125.

The Silver Cup Project

TO LIVE WITH BEAUTY EVERY DAY,
WE MUST TAKE IT, REIMAGINE IT, TRANSFORM
IT AND MAKE IT COMPLETELY OUR OWN.
A FEW DISTINCTIVE POINTS OF VIEW.



Photographs by Martyn Thompson
Intro Photograph by Roe Ethridge
Illustrations by Jean Philippe Delhomme



Opposite page: Sterling silver paper cup, \$575.

J. H. 1142



WHAT MAKES YOU HAPPY

The morning light

WHAT MAKES A HOME

Books coffee love

YOUR TIFFANY STERLING SILVER CUP

A perfect vessel

PATTI SMITH, WRITER





Ryan Korban



WHAT MAKES YOU HAPPY
Friday, Saturday, Sunday.

WHAT MAKES A HOME
A distinct feeling

YOUR TIFFANY STERLING SILVER CUP
Redefines everyday luxuries.

RYAN KORBAN, INTERIOR DESIGNER

Meet Roberta Hugo Guinness



WHAT MAKES YOU HAPPY

*dog-earred books
old friends, Sunshine, Flowers*

WHAT MAKES A HOME

*well-stocked pantry
Children's laughter, Pets, Home cooking*

YOUR TIFFANY STERLING SILVER CUP

*perfect shiny trophy
Mint Juleps, Classic design, Polished silver*

ELLIOTT PUCKETTE AND HUGO GUINNESS, ARTISTS





Vanessa Traina



WHAT MAKES YOU HAPPY

My husband, my son, weekends

WHAT MAKES A HOME

My husband, my son, warmth

YOUR TIFFANY STERLING SILVER CUP

Timeless, meaningful, purposeful

VANESSA TRAINA, CREATIVE DIRECTOR

Emily



WHAT MAKES YOU HAPPY

traveling

WHAT MAKES A HOME

Scent, sound, flowers.

YOUR TIFFANY STERLING SILVER CUP

turns anything into art.

EMILY WEISS, FOUNDER AND CEO OF GLOSSIER



Rare Specimen

NATURE IS A MAD GENIUS AND A BIT OF A SHOW-OFF.
HERE, SOME OF HER FINEST WORK —
ABSURDLY BEAUTIFUL CREATIONS THAT NEVER
FAIL TO MESMERIZE AND SURPRISE.

Photographs by Carlton Davis





Aquamarine

*Previous page and this spread:
Rings in platinum with gemstones and
diamonds, prices upon request.*



Yellow Sapphire



Green Tourmaline



Pink Tourmaline



Green Tourmaline



Spessartite



Opposite page: Ring in platinum with a gemstone and diamonds, price upon request.
This page: Rings in platinum with gemstones and diamonds, clockwise from top left: aquamarine, tanzanite, green tourmaline and tsavorite, prices upon request.

All You Need

LOVE IS THE ESSENCE OF TIFFANY.
AND THE NEW TIFFANY FRAGRANCE IS
THAT ESSENCE, CAPTURED.

Photographs by Steven Meisel
Bottle photograph by Mario Godlewski



TITLE *Modern Alchemy*

PHOTOGRAPHS *Frederik Veronysse*



Previous page: Tiffany Keys petals key pendant, from \$4,000. Tiffany 1837® pendant, \$325. Tiffany T rings, \$2,200. Tiffany Embrace® rings, from \$6,225. Tiffany Cirklet necklaces, from \$43,000. Chains sold separately. *This page:* Tiffany Fragrance, from \$75. *Opposite page:* Tiffany Cirklet necklaces, from \$43,000.

IN CONVERSATION WITH DANIELA ANDRIER,
THE PERFUMER BEHIND TIFFANY, THE FRAGRANCE

*a beautiful
mix of
tradition
and
modernity*

To establish the bond between a brand and a perfume is magical and poetic. What I had in mind when working on Tiffany's fragrance was to make something that has a radiant light to it—like a beautiful stone that you wear. I wanted to embrace the values of the brand: love, elegance, creativity and modernity. The scent is a sparkling floral musk, a contemporary take on highly precious ingredients of traditional haute perfumery. The process of creation is very intuitive. I realized after the fact that my first choice, Iris, was both the most expensive ingredient in perfumery, and almost faceted—like a gemstone. We introduced a unique version of Iris, developed exclusively for Tiffany. We were able to strip away certain elements, keeping only its pure, bright and sensual side.

I combined this with other new and refined musk and floral ingredients, which were crafted to bring out a personality very different from their traditional essences. The use of these exclusive materials, combined in an artisanal way, is a beautiful mix of tradition and modernity. It allowed us to create something timeless that smells unlike anything that's come before.



Previous page: Tiffany Keys petals key pendant, from \$4,000. Tiffany 1837® pendant, \$325. Tiffany T rings, \$2,200. Tiffany Embrace® rings, from \$6,225. Tiffany Cirklet necklaces, from \$43,000. Chains sold separately. *This page:* Tiffany Fragrance, from \$75. *Opposite page:* Tiffany Cirklet necklaces, from \$43,000.



Previous page: Tiffany Keys petals key pendant, from \$4,000. Tiffany 1837® pendant, \$325. Tiffany T rings, \$2,200. Tiffany Embrace® rings, from \$6,225. Tiffany Circler necklaces, from \$43,000. Chains sold separately. *This page:* Tiffany Fragrance, from \$75. *Opposite page:* Tiffany Circler necklaces, from \$43,000.

Specimen:	Iris	Subfamily:	Iridoideae
Kingdom:	Plantae	Tribe:	Irideae
(unranked):	Angiosperms	Genus:	Iris
(unranked):	Monocots	Type species:	<i>Iris germanica</i>
Order:	Asparagales	Subgenera:	<i>Hermodactyloides</i> , <i>Iris</i> , <i>Limniris</i> , <i>Nepalensis</i> , <i>Scorpiris</i> , <i>Xiphium</i>
Family:	Iridaceae		



Previous page: Tiffany Keys petals key pendant, from \$4,000. Tiffany 1837® pendant, \$325. Tiffany T rings, \$2,200. Tiffany Embrace® rings, from \$6,225. Tiffany Cirklet necklaces, from \$43,000. Chains sold separately. This page: Tiffany Fragrance, from \$75. Opposite page: Tiffany Cirklet necklaces, from \$43,000.



PROJECT	Tiffany Fragrance
HEART NOTE	Iris
FRAGRANCE	This modern, artisanal scent, with the noble iris at its heart, is as exhilarating and inspired as love itself.
SAMPLE	
NOTES	Top notes of vert de mandarine. At the heart, a precious iris flower is the hero ingredient. Patchouli and musk base notes. The final structure is both unexpected and timeless—scent in its most elemental form.
EDITORIAL	<i>Modern Alchemy</i>



Previous page: Tiffany Keys petals key pendant, from \$4,000. Tiffany 1837® pendant, \$325. Tiffany T rings, \$2,200. Tiffany Embrace® rings, from \$6,225. Tiffany Circllet necklaces, from \$43,000. Chains sold separately. This page: Tiffany Fragrance, from \$75. Opposite page: Tiffany Circllet necklaces, from \$43,000.

Urban Legends

TIFFANY'S CREATIVITY HAS ALWAYS BEEN PART OF THE ENERGY
OF NEW YORK, WITHOUT RULES, WITHOUT LIMITS,
WITHOUT FEAR. AFTER 180 YEARS, WE'VE BECOME PART
OF THE VERY FABRIC OF THIS AMAZING CITY.

Photographs by Raymond Meier





© FLC

“A hundred times I have thought: New York is a catastrophe,
and fifty times: it is a beautiful catastrophe.”

—Le Corbusier



Opening page: The Tiffany® Setting, from \$1,480. Opposite page: Tiffany Keys petals key pendant, from \$4,000.
Chain sold separately. This page: Return to Tiffany® designs, from \$300.

“... New York is always hopeful. Always it believes that something good is about to come off, and it must hurry to meet it.”

—Dorothy Parker



This page: Tiffany HardWear wrap bracelet, from \$975.

Opposite page: Paloma's Graffiti love pendant with diamonds, \$3,200. Original designs copyrighted by Paloma Picasso.



© 1999 by The Regents of the University of California © Editions Gallimard, Paris, 1954.

“There is something in the New York air
that makes sleep useless.”

—Simone de Beauvoir



Opposite page: Tiffany T smile pendant with diamonds, from \$1,900.
This page: Elsa Peretti® Open Heart pendant on silk, \$475. Original designs copyrighted by Elsa Peretti.

“New York is a diamond iceberg
floating in river water.”

—Truman Capote



*This page: Tiffany Victoria® designs, from \$2,950.
Opposite page: Tiffany & Co. Schlumberger® Sixteen Stone ring, from \$9,200.*



"It'll be a great place if they ever finish it."

—O. Henry



Opposite page: Tiffany East West® automatic 3-Hand 46.5 x 27.5 mm watch, \$4,750.

This page: Tiffany T square bracelets with diamonds, \$10,500.

JUST WHEN YOU
THOUGHT YOU KNEW
US, WE GO AND
MIX IT UP AGAIN.
THE ELEMENTS OF
THE RETURN TO TIFFANY®
COLLECTION—
REINVENTED,
REWORKED, RENEWED.

TO
TIFFANY







Opening page: Return to Tiffany® pendant, \$300. Previous spread: Tiffany Tags designs, from \$1,400. Return to Tiffany® designs, from \$300. Paloma's Graffiti love designs, from \$725. Chain sold separately. This spread: Return to Tiffany® designs, from \$300. Tiffany solitaire pendant, from \$1,090. Original designs copyrighted by Paloma Picasso.





Previous spread: Tiffany T earrings, from \$1,650. Paloma's Graffiti love pendant, from \$3,200. Tiffany Tags pendant, from \$750. Return to Tiffany® pendant, \$300. Pet accessories, from \$150.
This spread: Tiffany T smile pendant, from \$1,900. Paloma's Graffiti peace pendant, from \$3,200. Return to Tiffany® designs, from \$300. Original designs copyrighted by Paloma Picasso.

Love Stories

“They slipped briskly into an intimacy
from which they never recovered.”

—F. Scott Fitzgerald



Photographs by Thomas Milewski

F. SCOTT FITZGERALD IS A TRADEMARK OF THE FITZGERALD ESTATE LIMITED.

10 YEARS

4 KIDS

2 DOGS

3 HOUSES

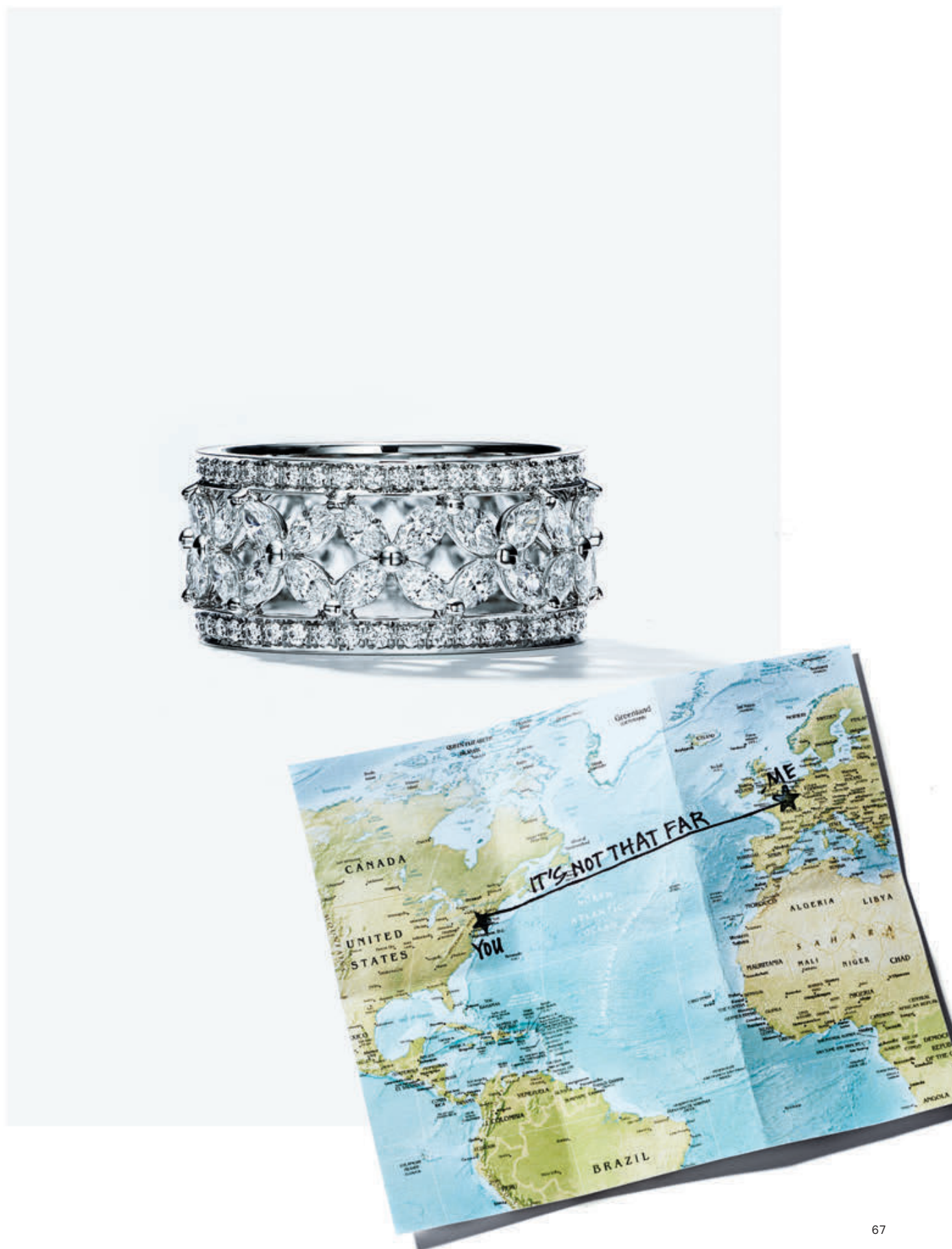
5 HAMSTERS

AND
1 PARAKEET
LATER...

I'D
DO IT
ALL OVER
AGAIN

(MAYBE
WITHOUT
THE PARAKEET)

love,
BEN



Opening page: Tiffany Classic™ ring, from \$650. Tiffany Harmony® rings, from \$1,480.
This spread: Tiffany Soleste® rings, from \$3,025. Tiffany Victoria® ring, \$16,000.

I have a 20-year-old
German sports car, a
pre-WWII navy slicker
rain coat, shave with
a mug, brush and a straight
blade and collect Buddhas.
Why would I want a
run of the mill woman?



This page: Paloma's Groove™ ring, \$800. Tiffany Flat wedding band ring, from \$1,150.
Opposite page: Paloma's Graffiti love ring, \$3,900. Tiffany Embrace band rings, from \$6,225.
Original designs copyrighted by Paloma Picasso.



Tiffany Classic™ rings, from \$650. Tiffany Embrace® band ring, from \$5,925.
For more information on customizing and engraving, please visit [Tiffany.com](https://www.tiffany.com).



The Tiffany® Setting, from \$1,480.



My TIFFANY

FOR MODEL/ACTIVIST DOUTZEN KROES, HER TIFFANY DIAMOND WEDDING BAND CHANGED EVERYTHING.

My husband and I met in 2009 when mutual friends introduced us at a music festival. When it was over, I gave him every possible phone number or email address for me. I wanted to make sure there was no way he could not find me. I never really stopped to think it through. It felt right and everything made sense. I simply let my heart guide me on this, and it has led me so well. We got engaged in Suriname, where he's from, on New Year's Eve of 2009. We were on jet skis on a river at the end of the day. The sun was setting and it was quiet and incredibly beautiful. I thought I had seen a box in his pocket and was so sure he was about to propose, and then he didn't! I couldn't believe it! It wasn't until a little later that evening, in a little tree house deep in the jungle, that he asked me to marry him. I think he chose that moment and that

place because he felt very connected to his roots in his home, very empowered. It was magical, very tender. When it came time to pick a wedding band, I knew I wanted to go to Tiffany because that's such a dream. We were married a short time later on a small houseboat on a canal in Amsterdam. Something felt very different for me after that day. Because I had been traveling all over the world from such a young age, I felt like I was always searching, always seeking. Having that band on my finger was a very grounding thing. It meant I could stop looking around, and just be at peace, that we could create our own beautiful family. When I take it off for a shoot, it always feels a little strange, like my heart is empty. So I put it back on as soon as I can. This ring represents our love, our bond, our family and the future we are building together.

Portrait by Paul Bellaart. Still life courtesy of Doutzen Kroes.

TO ORDER VISIT TIFFANY.COM/FALL
OR CALL 800 843 3269
WEEKDAYS 8AM TO 12AM AND WEEKENDS 10AM TO 5PM EST.

TIFFANY®, TIFFANY & CO., T&CO., RETURN TO TIFFANY®, TIFFANY VICTORIA®, the TIFFANY® SETTING, TIFFANY SOLESTE®, TIFFANY LEGACY®, TIFFANY CLASSIC™, TIFFANY JAZZ®, OUT OF RETIREMENT®, TIFFANY & CO. SCHLUMBERGER®, TIFFANY ENCHANT®, TIFFANY 1837®, TIFFANY EAST WEST®, TIFFANY HARMONY®, TIFFANY EMBRACE®, TIFFANY BLUE BOX® and the color and mark TIFFANY BLUE® are trademarks or registered trademarks of Tiffany and Company and its affiliates, in the U.S. and other countries. All designs copyrighted by Tiffany and Company except where otherwise noted. Elsa Peretti® and Diamonds by the Yard® are trademarks of Elsa Peretti. Original designs copyrighted by Elsa Peretti. Paloma Picasso® and Paloma's Groove™ are trademarks of Paloma Picasso. Paloma Picasso designs copyrighted by Paloma Picasso. Prices valid as of July 2017 and subject to change without notice. Merchandise shown may not be available in all locations. Items may appear larger or smaller due to photography techniques. To remove your name from our mailing list, please contact customer service.

© 2017, Tiffany and Company. USK17

On the cover: Tiffany T designs, from \$1,600. Tiffany Metro designs with diamonds, from \$6,900.
Introduction: Sterling silver bird's nest with Tiffany Blue® porcelain eggs, \$10,000. The Tiffany® Setting, from \$1,480.

