



TIFFANY & Co.

NEW YORK SINCE 1837

THERE ARE PRESENTS
FOR LOVED ONES.
THERE ARE CAREFULLY
PLANNED SURPRISES.
THERE ARE
THOUGHTFULLY
CRAFTED LISTS,
AND BEAUTIFULLY
WRAPPED GIFTS.
BUT THERE IS ONLY
ONE BOX THAT
MAKES THE
HOLIDAY PERFECT.

JOY COMES OUT OF THE BLUE



THE DREAMER

For the dreamer who never
stops wishing for magic.



TIFFANY VICTORIA™

Tiffany Victoria™ designs in platinum with diamonds.
Mixed cluster drop pendant, \$26,400. Mixed cluster necklace, \$132,000.



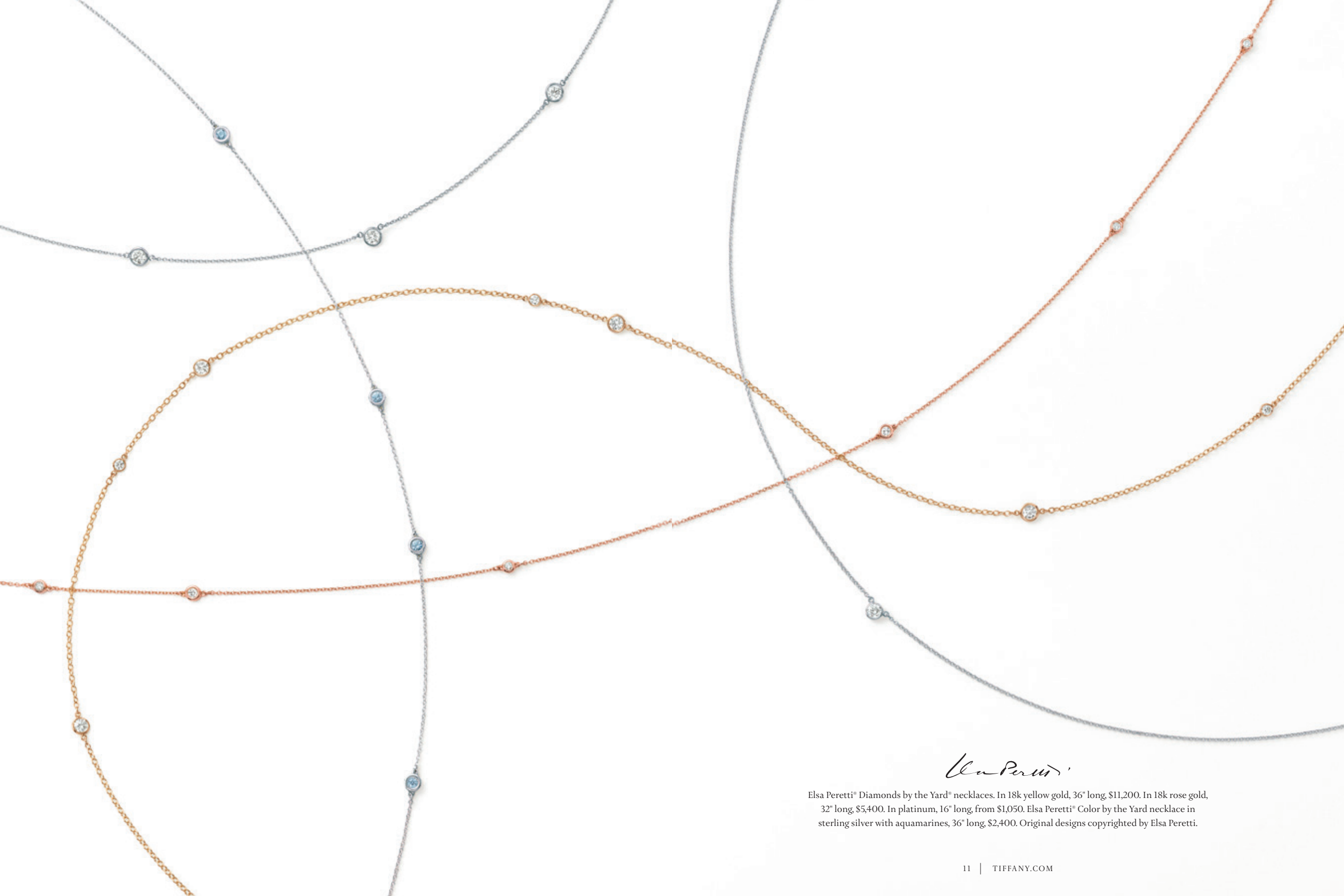
Bracelets in platinum with diamonds, from top: Tiffany Victoria™ line bracelet, from \$22,500. Tiffany Jazz™, \$13,900. Tiffany T line bracelet in 18k white gold, from \$19,800. Tiffany Victoria™ mixed cluster bracelet, \$59,500.



LEFT Tiffany Victoria™ designs in platinum with diamonds.
Pendant, from \$2,650. Mixed cluster pendant, from \$6,500.

RIGHT Pendants with diamonds, from top: Tiffany Soleste in 18k rose gold, \$3,850. Tiffany Soleste in platinum with diamonds, from \$4,150.
Tiffany Bow in 18k white gold, from \$4,650.





Elsa Peretti

Elsa Peretti® Diamonds by the Yard® necklaces. In 18k yellow gold, 36" long, \$11,200. In 18k rose gold, 32" long, \$5,400. In platinum, 16" long, from \$1,050. Elsa Peretti® Color by the Yard necklace in sterling silver with aquamarines, 36" long, \$2,400. Original designs copyrighted by Elsa Peretti.



LEFT Tiffany Bow cuff in 18k white gold with diamonds, \$9,900.

RIGHT Rings with diamonds. Tiffany Bow in 18k rose gold, \$5,000.
Tiffany Metro in 18k white gold, \$2,900.



Earrings in platinum with diamonds, from left:
Tiffany Victoria™, from \$4,100. Tiffany Victoria™ bow, \$11,600. Tiffany solitaire,
from \$2,550. Tiffany Victoria™ mixed cluster, from \$11,200.



LEFT Tiffany Victoria™ key pendant in platinum with diamonds, \$13,900. Oval link chain in 18k white gold, from \$530. Key and chain sold separately.

RIGHT Tiffany Keys pendants with diamonds, from left: Floral key in 18k white gold, \$2,600. Quatra heart key in 18k rose gold, \$6,100. Oval key in platinum, \$5,300. Chains in 18k gold, from \$295. Keys and chains sold separately.



LEFT Tiffany Keys pendants with diamonds, from left: Tiffany Enchant* heart key in platinum, \$13,900. Petals key in 18k rose gold, \$11,000. Oval link chains in 18k gold, from \$530. Keys and chains sold separately.



RIGHT Tiffany Keys pendants with diamonds, from left: Crown key in 18k white gold, \$3,150. Knot key in 18k rose gold, \$4,700. Mini vintage oval key in 18k rose gold, \$2,650. Chains in 18k gold, from \$295. Keys and chains sold separately.



LEFT Tiffany Keys pendants in platinum with yellow and white diamonds, from left: Square kaleidoscope key with a diamond chain, from \$37,000. Round kaleidoscope key, from \$11,400. Platinum chain, from \$530. Key and chain sold separately.

RIGHT Tiffany Keys pendants in platinum with yellow and white diamonds, from left: Crown key, from \$5,600. Open daisy key, \$7,650. Floret key, \$9,100. Platinum chains, from \$530. Keys and chains sold separately.



Tiffany Soleste rings in platinum with round brilliant white diamonds, from left: Cushion-cut yellow diamond with 18k yellow gold, from \$6,300. Round brilliant white diamond with pink diamonds and 18k rose gold, from \$7,150. Pear-shaped tanzanite, \$11,600. Round pink sapphire, from \$9,900. Pear-shaped aquamarine, \$11,100. Round sapphire, from \$10,300.



Tiffany Celebration® rings in platinum with diamonds, from left: Etoile five-row ring, from \$21,500. Tiffany & Co. Schlumberger Sixteen Stone ring with 18k yellow gold, from \$11,900. Shared-setting band ring, from \$12,500. Tiffany Aria band ring, from \$18,500. Tiffany & Co. Schlumberger two-row rope ring, \$7,000. Shared-setting band ring, from \$20,500. Tiffany Metro ring in 18k rose gold, \$2,900. Tiffany Victoria™ alternating band ring, from \$18,400.



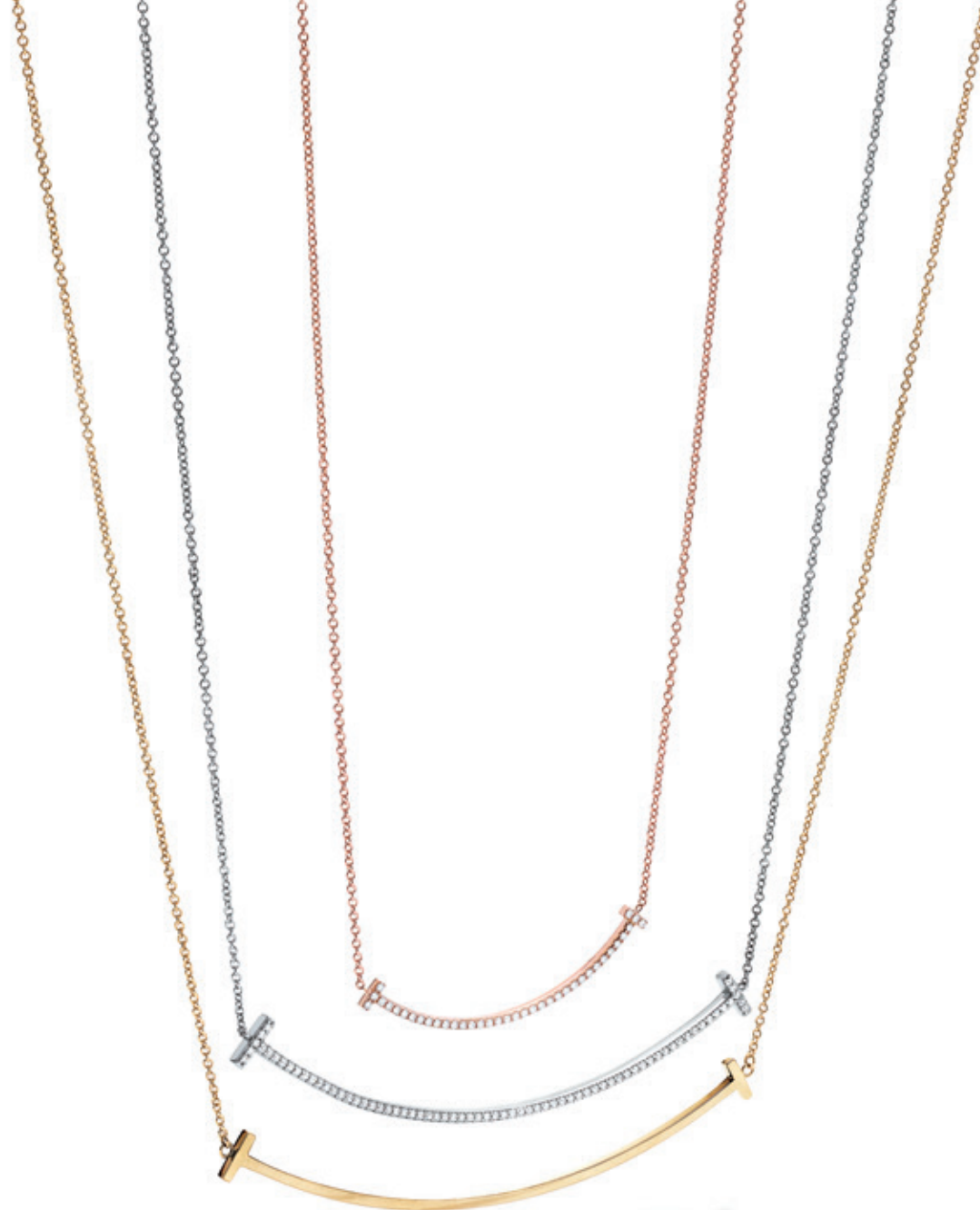
THE MODERNIST

Refined designs for your most
stylish loved ones.



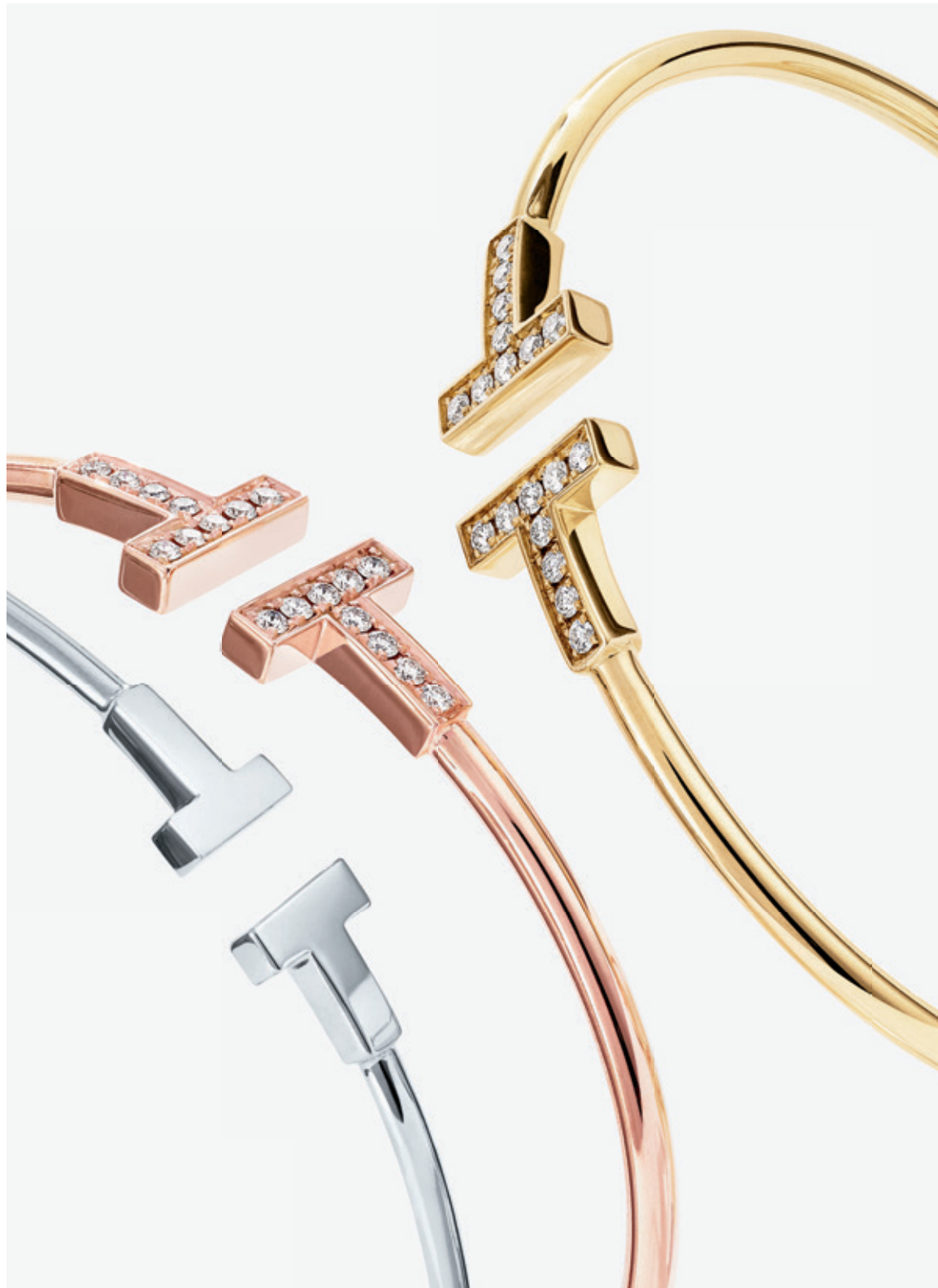
TIFFANY T

Tiffany T designs, from left: Square bracelet in 18k yellow gold, \$6,850. Cutout cuff in 18k yellow gold with white ceramic, \$11,200. Wrap ring in 18k rose gold with diamonds, \$3,050.



LEFT Tiffany T chain bracelets, from left: In sterling silver, \$1,300. In 18k yellow gold, \$7,400. Narrow in sterling silver, \$760. Narrow in 18k rose gold, \$3,050.

RIGHT Tiffany T smile pendants, from top: Mini in 18k rose gold with diamonds, \$2,500. In 18k white gold with diamonds, \$4,650. In 18k yellow gold, \$1,250.



LEFT Tiffany T wire bracelets, from left: Narrow in 18k white gold, \$1,600. In 18k rose gold with diamonds, \$4,250. In 18k yellow gold with diamonds, \$4,250.

RIGHT Tiffany T wire rings with diamonds. In 18k white gold, \$2,900. In 18k rose gold, \$2,100.



LEFT Tiffany Infinity rings, clockwise from top: In 18k yellow gold, \$1,050. In 18k white gold with diamonds, \$2,900. In 18k rose gold with diamonds, \$2,900. In sterling silver, \$365.

RIGHT Tiffany Infinity designs. Necklaces in 18k yellow and rose gold, from \$1,300.
Pendant in sterling silver, \$330.





LEFT Tiffany Infinity cuffs. In 18k rose gold, \$3,700. In sterling silver, \$660.



RIGHT Tiffany Infinity cuff in 18k yellow gold with diamonds, \$6,500.



LEFT Atlas™ pierced pendants with diamonds in 18k white, yellow and rose gold, \$1,050 each.



RIGHT Atlas™ open pendant in 18k white gold with diamonds, from \$3,100.



Atlas™ designs, from left: Open-hinged bangle in 18k rose gold with diamonds, \$14,500. Narrow open bangle in 18k rose gold, \$4,650. Closed-hinged bangle in 18k rose gold with diamonds, \$8,600. Narrow open bangle in sterling silver, \$725. Open ring in 18k white gold with diamonds, \$4,900. Narrow pierced ring in 18k rose gold with diamonds, \$1,100. Open ring in 18k yellow gold, \$1,200.



LEFT Tiffany 1837™ designs in sterling silver and Rubedo® metal, from left: Small interlocking circles pendant, \$395. Interlocking circles pendant, \$465.

RIGHT Tiffany 1837™ designs in sterling silver, clockwise from top: Wide cuff, \$1,200. Wide ring, \$365. Ring, \$265.



Elsa Peretti

LEFT Elsa Peretti® Mesh scarf in sterling silver, large, 41.5" long, \$4,650; also available in small.

RIGHT Elsa Peretti® Bone cuffs, clockwise from top: In charcoal finish over copper, medium, \$660. In black finish over copper, medium, \$660. In 18k yellow gold, medium, \$19,800. In sterling silver, small, \$1,300. Available for left and right wrists. Original designs copyrighted by Elsa Peretti.

THE CHARMER

Perfect little presents to make
every moment feel special.



RETURN TO TIFFANY™

Return to Tiffany™ multi-heart tag bracelet in sterling silver, \$510.





LEFT Return to Tiffany™ designs, from left: Circle pendant in 18k yellow gold, \$990.
Circle duo pendant in sterling silver and Rubedo® metal, \$395.
Heart tag pendant in sterling silver with key in Rubedo® metal, \$330.

RIGHT Return to Tiffany™ designs in sterling silver. Heart tag bracelet, \$395. Circle stud earrings, \$295.



LEFT Return to Tiffany™ circle edge cuffs. In sterling silver, from \$530. In 18k yellow gold, from \$5,000.



RIGHT Return to Tiffany™ rings, from top: Heart tag ring in sterling silver with Rubedo™ metal, \$495. Circle tag ring in 18k yellow gold, \$1,450. Circle tag ring in sterling silver, \$365.



Elsa Peretti

LEFT Elsa Peretti® designs. Bean Design key ring in sterling silver with leather, \$260.
Eternal Circle key ring in sterling silver, \$200. Ballpoint pen in red lacquer, \$110; available in other colours.

RIGHT Elsa Peretti® designs in sterling silver. Heart box, \$330. Heart bookmark, \$80.
Original designs copyrighted by Elsa Peretti.



Elsa Peretti

LEFT Elsa Peretti® Open Heart pendant in 18k yellow gold, 36 mm wide, 30" long, \$5,950.

RIGHT Elsa Peretti® Open Heart pendants, from left: In sterling silver and 18k rose gold, 16 mm and 11 mm wide, 16" long, \$795. In 18k rose gold with diamonds, 16 mm wide, 16" long, \$6,100. In sterling silver, 11 mm wide, 16" long, \$165. Original designs copyrighted by Elsa Peretti.



Elsa Peretti

LEFT Elsa Peretti® Bean Design pendant in black lacquer on a silk cord, 50 mm wide, 18" long, \$330.

RIGHT Elsa Peretti® Bean Design. Pendant in 18k rose gold, 9 mm wide, 16" long, \$925. Pendant in sterling silver, 9 mm wide, 16" long, \$165. Also available in 18k yellow gold and larger sizes. Original designs copyrighted by Elsa Peretti.





LEFT Charms in sterling silver. Return to Tiffany™ heart tag, from \$100. Teddy bear, \$200. Tiffany Notes™, \$100; all letters available. Oval link clasp bracelet, \$825. Bracelet and charms sold separately.



RIGHT Charms in sterling silver. Crown, \$200. Tiffany Blue Box with enamel finish, \$330. Eiffel Tower, \$230.



Paloma Picasso

LEFT Paloma Picasso® Olive Leaf pendant in sterling silver, from \$430.

RIGHT Paloma Picasso® Olive Leaf cuffs. Narrow in 18k rose gold, \$9,900.
Wide in sterling silver, \$1,550. Original designs copyrighted by Paloma Picasso.



LEFT Tiffany CT60™ 3-Hand 34 mm automatic watch in stainless steel with diamonds, Swiss-made, \$11,000.



RIGHT Tiffany oval cocktail watches with diamonds, Swiss-made. In 18k white gold, \$17,700. In 18k rose gold with pavé dial, \$27,800.

THE EXPLORER

Straight from your favourite
adventurer's holiday wish list.



TIFFANY WATCHES

THIS SPREAD Tiffany East West™ 2-Hand watch in stainless steel, Swiss-made, \$4,400.

NEXT SPREAD Tiffany CT60™ watches, from left: Chronograph 42 mm automatic watch in stainless steel, Swiss-made, \$9,150. 3-Hand 40 mm automatic watch in 18k rose gold, Swiss-made, \$15,200.







LEFT Cuff links in sterling silver, clockwise from left: Barbell, \$330. Airplane, \$430. Oval, \$330; engraving additional.

RIGHT Cuff links in sterling silver, clockwise from top: Tiffany Metropolis, \$465. Tiffany Infinity, \$465. Knot in 18k yellow gold, \$4,250.



Paloma Picasso

Paloma Picasso® Knot designs in sterling silver, clockwise from left:
Bracelet with leather, \$560. Cuff, \$630. Double-wrap bracelet with leather, \$465.
Ring, \$430. Original designs copyrighted by Paloma Picasso.



THE ROMANTIC

Love at first sight, for the one
you love most.



THE TIFFANY® SETTING

The Tiffany® Setting, from \$2,350. Shared-setting diamond band ring in platinum, from \$20,500.

ALBERTA
Calgary Chinook Centre
Calgary Holt Renfrew store
Edmonton West Edmonton Mall

BRITISH COLUMBIA
Vancouver Holt Renfrew store
Vancouver Oakridge Centre
Vancouver 723 Burrard Street

ONTARIO
Ottawa Rideau Centre
Toronto Sherway Gardens Mall
Toronto Yorkdale Shopping Centre
Toronto 150 Bloor Street West

QUEBEC
Montréal Ritz-Carlton Hotel
Montréal Ogilvy 1307, Rue Sainte-Catherine Ouest



Tiffany & Co. views the protection of the environment as both a moral obligation and a business imperative. We proudly state that this catalogue is printed on paper that is Forest Stewardship Council® (FSC®) certified. It contains fibre from forests that are carefully managed, responsibly harvested and adhere to strict environmental and socioeconomic standards.

TIFFANY®, TIFFANY & CO.®, T&CO.®, TIFFANY VICTORIA™, TIFFANY JAZZ™, TIFFANY ENCHANT®, TIFFANY EAST WEST™, TIFFANY CT60™, TIFFANY NOTES™, ATLAS™, RETURN TO TIFFANY™, RUBEDO® metal, TIFFANY 1837™, TIFFANY CELEBRATION®, the TIFFANY® SETTING, Tiffany Blue Box, the Tiffany Blue Bag and the colour Tiffany Blue are trademarks or registered trademarks of Tiffany and Company and its affiliates, in the U.S. and other countries. All designs copyrighted by Tiffany and Company, except where otherwise noted. ELSA PERETTI® and Diamonds by the Yard® are trademarks of Elsa Peretti. Elsa Peretti designs copyrighted by Elsa Peretti. PALOMA PICASSO® is a trademark of Paloma Picasso. Paloma Picasso designs copyrighted by Paloma Picasso. Prices valid as of October 2015 and subject to change without notice. Merchandise shown may not be available in all locations. Items may appear larger or smaller than actual size due to photography techniques. To remove your name from our mailing list, please contact customer service.

© 2015, Tiffany and Company. H15CAB

To order, call 800 843 3269 weekdays 8 AM to 12 AM and weekends 10 AM to 5 PM EST or visit TIFFANY.COM.

